

Composer Evaluation Starter Package for Complex Lotus Notes Application Migration

Is your organization considering moving your complex Lotus Notes applications to the Microsoft .NET platform?

Companies today are planning application migration projects in order to reduce maintenance costs, address compliance and regulations, or because a merger and acquisition requires standardization. Whatever the business reasons, companies that begin initiatives to migrate Notes applications most often find that it's the migration of the complex applications that presents a key obstacle for moving forward. Up until now, companies have had little choice for these complex Notes applications, defined as those containing business logic/workflow (including LotusScript), other than a re-write.

Rewrite projects require a detailed understanding of application formulas, business logic, workflow and integration (database/other applications) in order to recreate an application that best serves the business. Additionally, rewrite projects require consensus across multiple lines of business, must reflect evolving application requirements, and may require specified training in order to achieve end user acceptance.

The opportunity to reduce cost while improving scalability, manageability and interoperability has resulted in an increased interest by organizations to repurpose their mission critical applications. To accomplish this, organizations can opt to rewrite, replace or migrate applications to a new platform.

Using Composer for Lotus Notes, organizations can automate the migration of Lotus Notes applications to a Microsoft .NET environment and not have to invest in a costly or risky application rewrite or replacement efforts. Composer automatically converts and compiles complex Lotus Notes applications to the Microsoft platform while preserving the business logic and user interface, in order to minimize disruption for end users.

According to a Harvard Business Review article titled "Radically Simple IT" (David M. Upton and Bradley R. Staats. "Radically Simple IT." Harvard Business Review. March 2008. Pages 118-125), "People typically resist adopting new systems, often because the cost (the effort) outweighs the benefits." To address this issue the article goes on to say that a like-for-like migration methodology would best serve the end user community, "by mimicking the old system's look and feel at least for a while, [they] were able to speed adoption of the new system."

Unify's Composer for Lotus Notes provides organizations with the technology to migrate complex, custom Notes applications in a like-for-like manner in order to ensure end user acceptance and adoption of the applications running on the new platform.

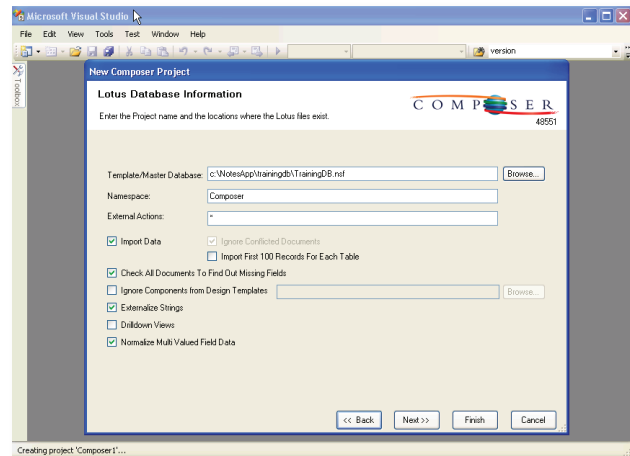


Figure 1: Migration Applications Using Composer

How do you test drive this technology to see for yourself?

Unify offers a Composer Evaluation Starter Package that allows you to perform migrations on Complex Notes applications to the Microsoft .NET platform. This program is designed for Solution Providers and organizations that want to assess the feasibility and viability of the migration technology in order to perform the migration work themselves. There is no restriction on the functionality of what gets converted. It is a full version of the Composer convertor.

Using the Composer Evaluation License, organizations can migrate:

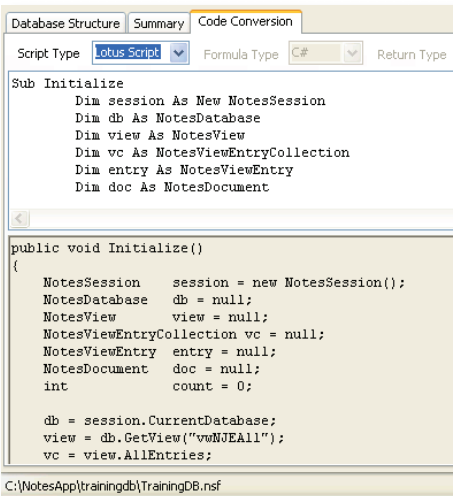
- The User Interface
- Document Data
- Security
- Business Logic

Composer Evaluation Starter Package

Organizations can then access and test the deployed application for 45 days from the start of the migration process. The evaluation enables ASP.NET developers and or Lotus Notes developers moving to ASP.NET development with knowledge of C#, to perform the evaluation and migration. As part of this evaluation period, you will have access to Unify experts for the applications you are migrating. There is also sufficient documentation provided to assist you in this process.

What is included in the Evaluation Starter Package?

A Composer Evaluation License includes the software migration tools, access to support and documentation to ensure a successful migration. As part of the evaluation package, you will receive a single **database migration license** for the Composer Application Converter. This is a Visual studio template that will allow you to perform a Notes database migration. The conversion process is fully automated and reduces the typical migration time from months to days, thus reducing the requirements placed on IT resources. There are a number of other tools that also provided as part of the evaluation. This includes the Composer Application Analyzer, Composer ACL Manager, and the Composer Data Pump.

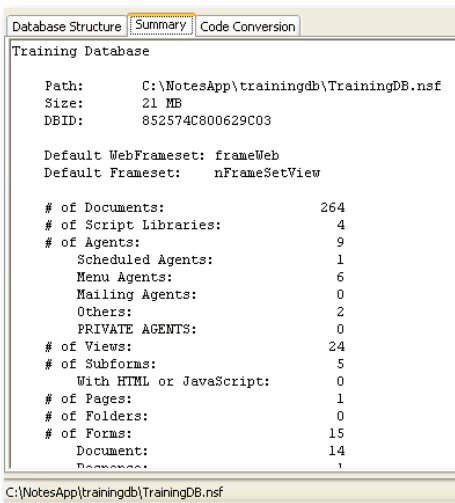


```
Database Structure | Summary | Code Conversion
Script Type: Lotus Script | Formula Type: C# | Return Type:
Sub Initialize
  Dim session As New NotesSession
  Dim db As NotesDatabase
  Dim view As NotesView
  Dim vc As NotesViewEntryCollection
  Dim entry As NotesViewEntry
  Dim doc As NotesDocument

public void Initialize()
{
  NotesSession session = new NotesSession();
  NotesDatabase db = null;
  NotesView view = null;
  NotesViewEntryCollection vc = null;
  NotesViewEntry entry = null;
  NotesDocument doc = null;
  int count = 0;

  db = session.CurrentDatabase;
  view = db.GetView("vwNWEAll");
  vc = view.AllEntries;
}
```

Figure 2: Composer App Analyzer



Training Database	
Path:	C:\NotesApp\trainingdb\TrainingDB.nsf
Size:	21 MB
DBID:	852574C800629C03
Default WebFrameset:	frameWeb
Default Frameset:	nFrameSetView
# of Documents:	264
# of Script Libraries:	4
# of Agents:	9
Scheduled Agents:	1
Menu Agents:	6
Mailing Agents:	0
Others:	2
PRIVATE AGENTS:	0
# of Views:	24
# of Subforms:	5
With HTML or JavaScript:	0
# of Pages:	1
# of Folders:	0
# of Forms:	15
Document:	14
Page:	1

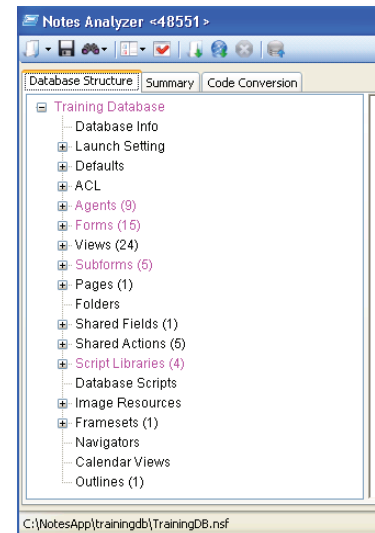
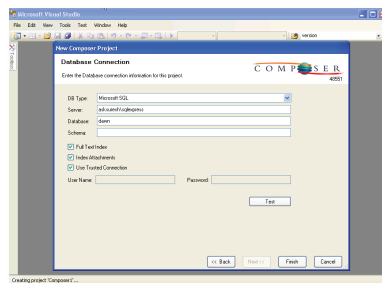
Figure 3: Composer App Analyzer

The **Composer Application Analyzer** provides a **detailed application analysis** that goes beyond the assessment tools currently available in the market. The Composer Application Analyzer identifies the usage and functionality of each attribute within an application to determine complexity. The application is then evaluated to determine a Like for Like migration by identifying any external interfaces, dependent databases and 3rd party products or implementation code that will need manual attention. You can utilize the data from the Application Analyzer to price out a migration engagement.

The Composer Application Converter migrates the NSF to a Visual Studio solution.

Composer transitions the components of the IBM Lotus Notes architecture to the corresponding Microsoft technologies (C#, Web Parts, ASPX, Active Directory, SharePoint, SQL Server), providing superior scalability and enterprise access. Customers are able to leverage Microsoft Visual Studio or Microsoft partners to implement new application functionality as business requirements evolve.

Figure 5: Composer Converter



Training Database	
Database Info	
Launch Setting	
Defaults	
ACL	
Agents (9)	
Forms (15)	
Views (24)	
Subforms (5)	
Pages (1)	
Folders	
Shared Fields (1)	
Shared Actions (5)	
Script Libraries (4)	
Database Scripts	
Image Resources	
Framesets (1)	
Navigators	
Calendar Views	
Outlines (1)	

Figure 4: Composer App Analyzer

Composer Evaluation Starter Package

Some key aspects of the conversion process that are managed with the Composer Converter include:

- **Database migration:** The database is created for Microsoft SQL Server. As part of the conversion, the data from the NSF file is loaded into the SQL Server database or repository. This import includes all of the data contained within the NSF file as well as the rich text data and associated attachments.
- **Security Implementation:** The ACL security and control is incorporated into the new database and services. The imported roles provide the same access control set as the IBM Lotus Notes system. For example, the security for reader/authors fields, menus and "hides when" functionalities are all preserved. The security is then mapped to the Microsoft Active Directory system.
- **Application Functionality:** All of the business and workflow logic is converted to standard C# and exposed as Web services.
- **User Interface:** The UI information for lists, forms, views, framesets, pages, subforms, and navigators is extracted from the IBM Lotus Notes NSF files and the corresponding Web Parts, ASP .NET components or SharePoint applications are constructed. The resulting application provides the same behavior and functionality as the original IBM Lotus Notes application.

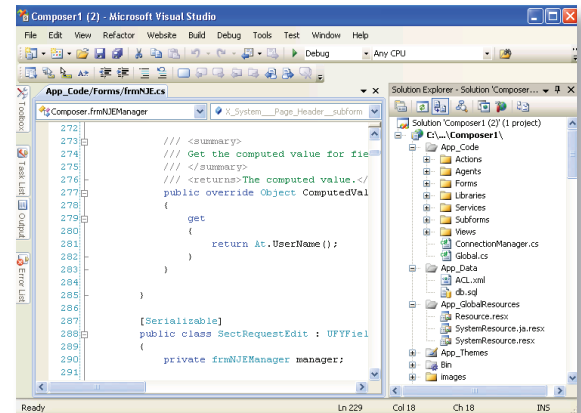


Figure 6: Composer Converter

The **Composer Data Pump** synchronizes data from the IBM Lotus Notes application database to the Microsoft SQL Server when switching to production or incrementally transitioning additional users or departments to the deployed application. The Composer Data Pump provides the capability to verify, validate, and map data structures for the final and incremental data transformation. It also provides a number of filters to apply for data extraction from a Notes database.

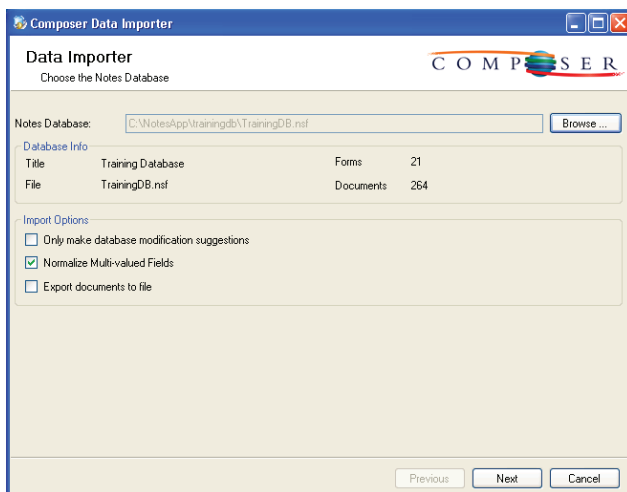


Figure 7: Composer Data Pump

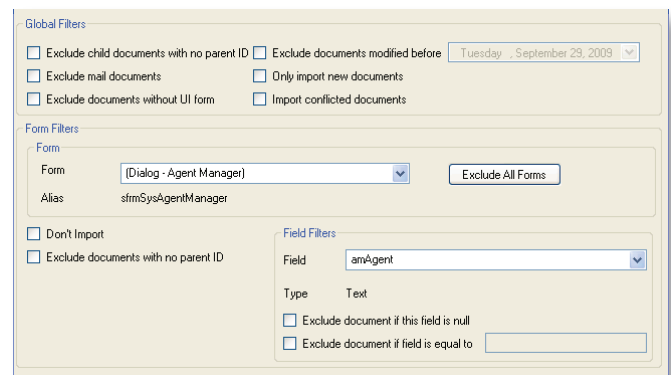


Figure 8: Composer Data Pump

Composer Evaluation Starter Package

The **Composer ACL Security Manager** assists developers in accurately mapping the existing Notes application ACL access levels and role information to the underlying security infrastructure within the migrated Notes application. The Composer ACL Security Manager provides developers with the capability to automatically connect to the migrated application security provider and interactively map all ACL users and roles to the corresponding values within the application security provider. This mapping enables the migrated security for document level "Readers" and "Authors" and object level hides-when security to continue to work as designed in the new Microsoft platform. The UI for this component is very similar to the existing IBM Lotus Notes ACL editor.

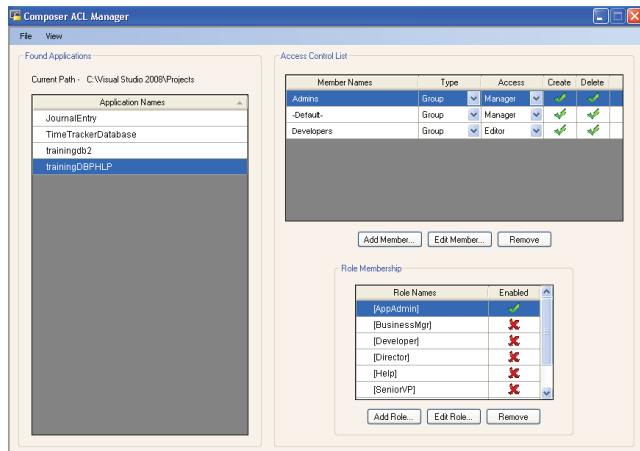


Figure 9: Composer ACL Security Manager

How do you get a copy of the Evaluation Starter Package?

Visit www.unify.com and complete the Evaluation Request form. You'll be contacted by Unify regarding the program specifics and paperwork and then you will be provided links to download the software.

FOR MORE INFORMATION ON UNIFY SOFTWARE CONTACT UNIFY TODAY AT INFO@UNIFY.COM.



About Unify

Unify is a global provider of application modernization, application development, data management, and content archiving solutions. The Company has a rich heritage of delivering enterprise software and services for modernizing and maximizing the performance of applications and data while providing significant and measurable return on investment for customers.

Unify's award-winning technologies help organizations drive business optimization, improve collaboration, increase customer service and reduce costs.

CORPORATE HEADQUARTERS

1420 Rocky Ridge Drive, Suite 380
Roseville, CA 95661
Tel: +1 916.218.4700
Email: info@unify.com

UNITED KINGDOM

Tel: +44 0 1753 245 510
Email: infouk@unify.com

FRANCE

Tel: +33 1 34 58 28 30
Email: infofr@unify.com

GERMANY

Tel: +49 811 55543 0
Email: infode@unify.com

AUSTRALIA

Tel: +61 402 208254
Email: asiapacinfo@unify.com

BRAZIL

Tel: +55 11 3054 6615
Email: infobr@unify.com

Copyright © 2009. Unify Corporation. All rights reserved.

CALL TODAY (+1) 800-248-6439

www.unify.com

