

## THE FASTEST AND EASIEST WAY TO WEB-ENABLE ACCELL/SQL APPLICATIONS

ACCELL/Web, the newest product of the ACCELL family of rapid application development systems, transforms ACCELL/SQL applications into fully graphical native Web applications in just a matter of days or weeks.

For a fraction of the cost and time it would take to rewrite an ACCELL/SQL application for the Web, ACCELL/Web quickly and easily provides a graphical interface to existing business applications and makes them viewable in a browser anytime, anywhere. Additionally, ACCELL/Web uses the same, proven ACCELL/SQL application code, significantly reducing application maintenance costs and increasing developer productivity.

Using the Java platform, ACCELL/Web modernizes character-based applications for the Web environment without a rewrite of the application, as the new ACCELL/ Web applications share the same proven ACCELL/SQL applications already used in production today.

### Fast Web-Enablement Using JSP, Servlets and JavaScript

ACCELL/Web is the ultimate solution for customers seeking to use existing business applications and deploy them to the Web. ACCELL/Web does this reliably and is scalable and fast!

Acting as a bridge between host-based ACCELL/SQL applications and Internet Java technologies, ACCELL/ Web uses JavaServer Pages™ (JSP), servlets and JavaScript. ACCELL/Web allows developers to translate ACCELL/SQL forms into JSP for subsequent use within a Web application. The generated JSP-based forms are fully functional and provide application functionality that is nearly identical to that of ACCELL/SQL.

ACCELL/Web consists of three products that are integrated with the existing ACCELL/SQL product:

1. **ACCELL/Web Developer** provides the ability to create Web applications utilizing the business rules and functionality of the existing ACCELL/SQL applications.
2. **ACCELL/Web Conversion Utility** quickly and simply generates Web pages from existing application forms.

### New in ACCELL 9.1

- Datetime integration with DataServer 9.1
- New Oracle 11 Database Access Layer
- Support for Windows 7
- Support for latest Linux and UNIX Operating Systems

### 3. ACCELL/Web Application Server

(AWAS) is a multi-user application server that provides the ability to run ACCELL/ Web applications.

The server communicates with the ACCELL/Web Servlet interface while maintaining all of the functionality of the original ACCELL/SQL application.

If applications use custom c-hooks, the ACCELL/Web Application Server (AWAS) can simply be re-linked with the c-hook libraries to incorporate that functionality.

A high performance Web application server is included as part of ACCELL/Web Application Server. This Java-based server provides the Java servlet engine required to run the ACCELL/Web communications servlet.

The ACCELL/Web servlet interacts with a user's Web browser and translates all information from the browser to the ACCELL/Web application and back to the user's browser.

# ACCELL®/WEB 9.1

## ACCELL/Web Components

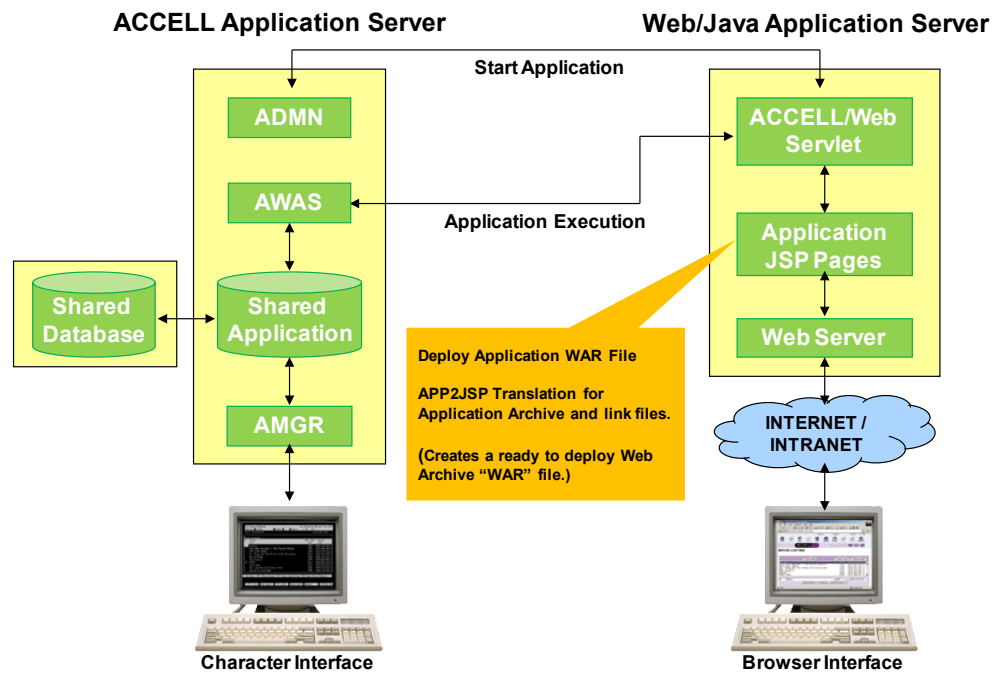
- Web pages and associated JavaScript provide the user interface
- Component applications provide the business logic for the application
- ACCELL/Web Servlet provides the communication between the Web pages and the components

The ACCELL/Web Servlet is provided as part of the ACCELL/Web product and requires no customization. The business logic components are actually the same components that are present in the existing ACCELL/SQL application.

In most companies, users of ACCELL/Web will be running the same application as that of the ACCELL/SQL users. This means there is one single application source code for support and maintenance, a critically important benefit as the ACCELL application evolves and enhancements are added to it.

Additional features can be added to the Web application. For example, to display images of products or services in the browser, a developer simply stores the image and name in the database. The Web application can then retrieve the image and display it on the JSP form.

The Web page components of the ACCELL/Web application are initially produced by the ACCELL/Web conversion utility provided. This utility takes an ACCELL/SQL archive and



link files, and generates the corresponding forms in a JSP format. The generated pages include client-side validation as well as object location, size and behavior.

Developers can use templates to customize the generated JSP files to contain images and color schemes that match the look and feel of each organization. The original out-of-the-box conversion includes background color, wallpaper, font styles (bold, blinking etc.), headers, footers, menu items, field validation in JavaScript and cached record set navigation.

After conversion, the developer can further enhance the generated JSP code by using JavaScript, HTML and the ACCELL/Web Class Library.

## BENEFITS OF UNIFY'S ACCELL/WEB

- USES ONLY ONE APPLICATION SOURCE
- FEATURES A GUI INTERFACE
- RAPID APPLICATION DEVELOPMENT
- BUILT ON INDUSTRY STANDARD JAVA TECHNOLOGY

ACCELL/WEB IS THE ULTIMATE SOLUTION FOR CUSTOMERS SEEKING TO USE EXISTING BUSINESS APPLICATIONS AND DEPLOY THEM TO THE WEB. ACCELL/WEB DOES THIS RELIABLY, IS SCALABLE AND FAST!

### Extremely Flexible Runtime Architecture

ACCELL/Web application components can be deployed in many different configurations. In the most simplistic configuration, they can all be deployed on the same machine, although a separation of Web server and ACCELL/Web application server is generally used.

For more complex environments, each major layer of an ACCELL/Web configuration (Web server, Java application server, ACCELL/Web application server, DBMS) can be deployed on a separate physical machine.

The conversion process produces a WAR (Web Application Archive) file containing all of the Web pages (in JSP format) and supporting files. To provide access to the ACCELL/Web application, this WAR file is then deployed on the Web application server.

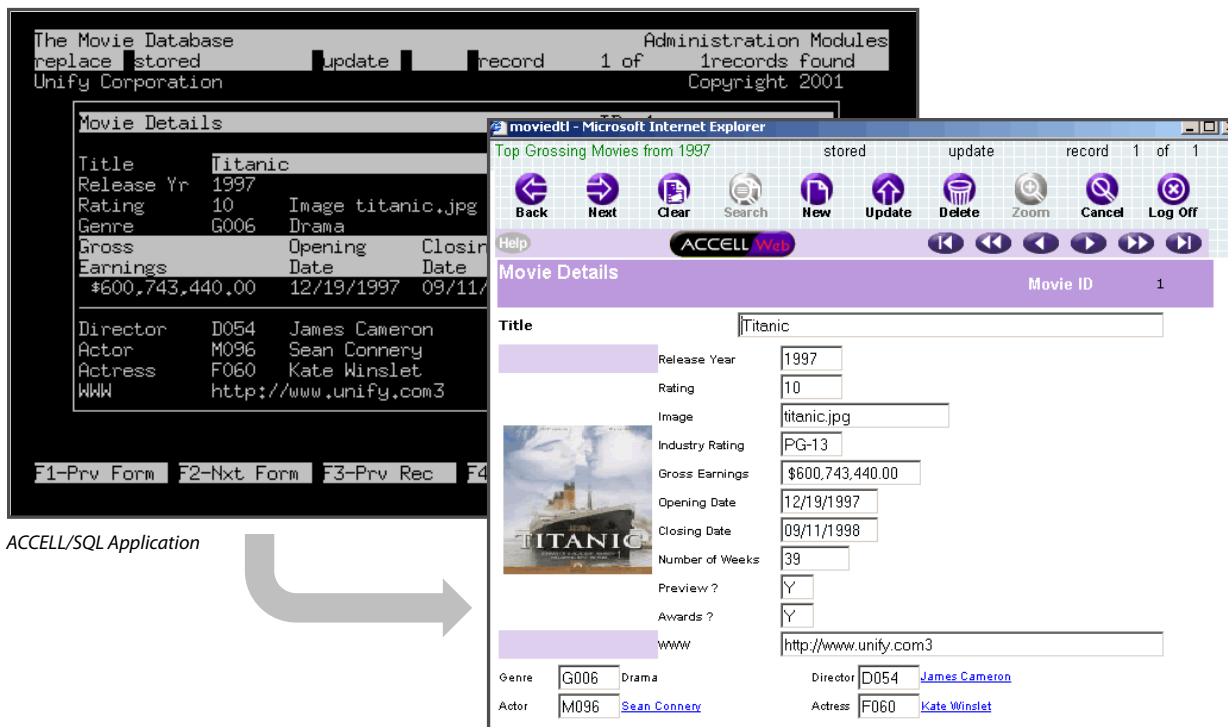
When a user launches the first form in the application from their browser, the ACCELL/Web Servlet communicates with the ACCELL/Web ADMN, which subsequently creates an AWAS connection

to communicate with that specific user. All transactions and business logic will be maintained for each user by that instance of the AWAS. User and application information will be passed from the AWAS through the ACCELL/Web Servlet to the user's browser.

From the users' perspective, the application functions in the same way as the current ACCELL/SQL application, except the interface will be through a Web browser. Once the user exits the application, the associated AWAS is terminated, thus freeing resources for subsequent users.

### MINIMIZE RISK, MAXIMIZE INVESTMENT

Business rules remain unchanged. ACCELL®/Web transforms ACCELL/SQL applications into fully graphical native Web applications in just a matter of days or weeks. For a fraction of the cost and time it would take to rewrite an ACCELL/SQL application for the Web, ACCELL/Web quickly and easily provides a graphical interface to existing business applications.



Native Web Application Using ACCELL/Web

## MEET CUSTOMER REQUIREMENTS AND REDUCE RISK

Web-enablement of ACCELL/SQL applications no longer requires costly and high risk application re-engineering. ACCELL/Web provides the most effective and efficient means to move ACCELL/SQL applications to the Web, meeting customer requirements for a graphical interface.

By combining the industry standard Java platform with existing ACCELL/SQL applications, Unify customers can now Web-enable their applications in weeks rather than months or even years. Don't lose years of investments in your ACCELL technology. ACCELL/Web is the ideal solution for Web-enabling character applications quickly and easily with minimal risk.

## KEY FEATURES

- Web-enables ACCELL/SQL apps in days or weeks rather than months or years
- Uses single application source code
- Makes use of existing, proven ACCELL/SQL applications
- No changes to business rules
- Builds native Web applications
- Leverages existing investments
- Uses industry standard Java (JSP, servlets, JavaScript)
- Meets customers requirements for a GUI interface
- Leverages experience/skills of current engineers
- Applies rapid application development capabilities of ACCELL to the Web
- Web/Java-based application server included with ACCELL/Web

FOR MORE INFORMATION ON UNIFY SOFTWARE CONTACT UNIFY TODAY AT [INFO@UNIFY.COM](mailto:INFO@UNIFY.COM).



## HIGHLIGHTS

- CREATES WEB APPLICATIONS FROM ACCELL/SQL APPLICATIONS QUICKLY
- MINIMIZES RISK BY LEVERAGING EXISTING INVESTMENTS
- DOES NOT REQUIRE ANY CHANGES TO YOUR BUSINESS RULES

## PLATFORM SUPPORT

- Red Hat Linux 5, 6
- Solaris 9, 10
- HP-UX 11.31
- AIX 6, 7
- SCO OpenServer 6
- Windows XP, Vista, Server 2008, 7

## DATABASE SUPPORT

- Unify DataServer 9.1
- Oracle 10, 11

## CORPORATE HEADQUARTERS

1420 Rocky Ridge Drive, Suite 380  
Roseville, CA 95661  
Tel: +1 916.218.4700  
Email: [info@unify.com](mailto:info@unify.com)

## UNITED KINGDOM

Tel: +44 (0)1753 245 510  
Email: [infouk@unify.com](mailto:infouk@unify.com)

## FRANCE

Tel: +33 1 34 58 28 30  
Email: [infofr@unify.com](mailto:infofr@unify.com)

## GERMANY

Tel: +49 89 208039 – 158  
Email: [infode@unify.com](mailto:infode@unify.com)

## AUSTRALIA

Tel: +61 402 208254  
Email: [asiapacinfo@unify.com](mailto:asiapacinfo@unify.com)

Copyright © 2011, Unify. All rights reserved.