

## POWERFUL BPM BASED RICH INTERNET AND SOA BUSINESS APPLICATIONS

NXJ Enterprise builds powerful business process management (BPM) SOA-based applications. Companies looking to automate their business processes with modern, Web-based applications that will increase operational performance, cut costs, reduce cycle times and measure results use NXJ Enterprise. Adding robust BPM design and deployment to the application development lifecycle makes NXJ Enterprise a perfect choice for rapid, cost effective development of workflow-based applications.

### NXJ Enterprise BPM Capability

NXJ Enterprise offers all the functionality required for a comprehensive, integrated business process automation solution. The small size, universal compatibility and multiple scripting language capabilities allow for rapid integration with minimal impact on existing IT resources.

### Define Business Processes

NXJ Enterprise includes a user-friendly graphical modeling environment for defining complex business processes (Figure 1). It allows the non-technical business user to use both point-and-click process authoring and provides more powerful scripting language-based programming capabilities.

### Integrate With Existing Applications

NXJ Enterprise provides rapid deployment and flexible enactment of workflow or process-centric applications that seamlessly integrate with existing J2EE applications and reports.

### Connect Users and Processes

NXJ Enterprise applications deliver the right information to the right people at the right time. Its rich user-centric environment allows for the development of sophisticated Web-based UI for workflow applications and integration with existing systems.

### Integrate People, Processes and Applications

NXJ Enterprise provides power, flexibility and customization to meet each organization's unique business needs, including a small footprint, easy database access, comprehensive APIs, accessible via a variety of methods and protocols and extensible activity scripting in Java and other languages.

The automation, integration and optimization of processes across the enterprise are essential to gaining a competitive advantage, increasing revenues and reducing costs. NXJ Enterprise provides the functionality companies need to solve business process problems and improve operations and efficiencies.

### New in NXJ Developer 12.1

- New Themed Application Toolbars
- Dynamic Grid, populate from Query
- Dynamically add and remove Grid Columns
- Quicker Code Validation
- New Default Base Class for Best Practice Coding Support
- Support for Internet Explorer 7, 8 and Firefox 4, 5, 7

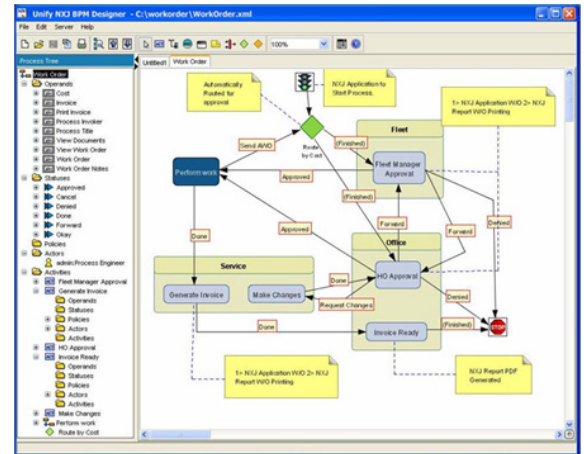


Figure 1. Graphical modeling for BPM applications.

### Easily Design and Deploy BPM

#### BPM DESIGNER

- Graphical modeling environment used for defining complex business processes such as nested processes, parallel tasks and complex conditionals.

#### BPM ENGINE

- High-performance, J2EE-based process engine for rapid deployment and flexible enactment of workflow or process integration applications.
- Processes integrate seamlessly with existing J2EE applications, SOA enabled applications and reports.

## NXJ® ENTERPRISE BENEFITS

### Benefits of NXJ Enterprise

- Automate and streamline business processes
- Rapid delivery and change through visual construction
- Powerful model to support any requirement
- Highly automated to minimize coding
- Standards-based for seamless integration in an SOA application world
- Capable of modeling any business process, including group assignments, parallel tasks and complex conditionals
- Users and roles are supported with ability to tie into standard directory services such as LDAP
- XML process templates are cloned into run-time instances and provide control over deployment and changes
- Activities can include sub-processes; call other applications or other processes activated by internal state changes or external events
- Universal compatibility and multiple scripting language capabilities allow for rapid integration with minimal impact on existing IT resources

### A Comprehensive Suite of Components

- Dynamic interaction with Web Services - BPM processes can call Web Services, SOAP Services and other applications can invoke NXJ Enterprise as a Web Service
- Graphical modeling tool provides an intuitive environment for defining and deploying processes
- EJB-based server provides automation engine for workflow and process integration
- JSP/Servlet framework provides front-end application integration and user interface building tools

FOR MORE INFORMATION ON UNIFY SOFTWARE CONTACT UNIFY TODAY AT [INFO@UNIFY.COM](mailto:INFO@UNIFY.COM).



### NXJ ENTERPRISE DESIGNER

- Windows XP
- Windows Server 2008
- Windows Vista
- Windows 7

### NXJ ENTERPRISE SERVER

- JBoss (included)

### WINDOWS

- Windows Server 2008
- Windows 7

### LINUX

- RedHat AS/ES 5
- RedHat AS/ES 6
- SuSE 10 Enterprise

### UNIX

- IBM AIX 6, 7
- HP-UX 11.31
- Solaris 9, 10

### UNIFY HEADQUARTERS

1420 Rocky Ridge Drive, Suite 380  
Roseville, CA 95661  
Tel: +1 916.218.4700  
Email: [info@unify.com](mailto:info@unify.com)

### UNITED KINGDOM

Tel: +44 0 1753 245 510  
Email: [infouk@unify.com](mailto:infouk@unify.com)

### FRANCE

Tel: +33 1 34 58 28 30  
Email: [infofr@unify.com](mailto:infofr@unify.com)

### GERMANY

Tel: +49 89 208039 158  
Email: [infode@unify.com](mailto:infode@unify.com)

### AUSTRALIA

Tel: +61 402 208254  
Email: [asiapacinfo@unify.com](mailto:asiapacinfo@unify.com)

### BRAZIL

Tel: +55 11 2344 1856  
Email: [infobr@unify.com](mailto:infobr@unify.com)

Copyright © 2011. Unify Corporation. All rights reserved.