

## THE MOST RELIABLE EMBEDDED DATABASE JUST GOT BETTER

SQLBase is a fully relational, high performance, embedded database that allows organizations to manage data closer to the customer, where capturing and organizing information is critical. SQLBase provides what other database companies cannot deliver - a self-recovering, maintenance-free embedded database architecture that enables users from corporate IT to ISVs to focus on the business application itself - not the underlying database technology. With its small footprint, easy installation and low TCO, SQLBase is the embedded database of choice for organizations around the world.

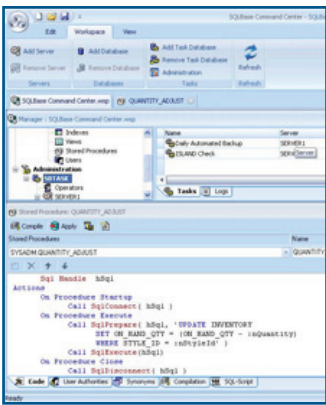


Figure 1: SQLBase Command Center

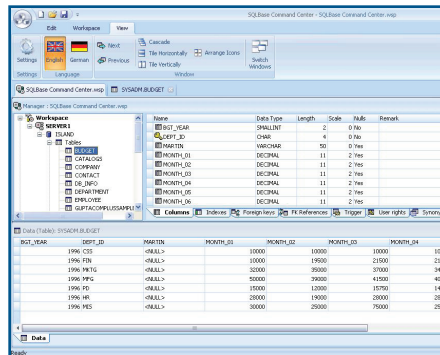


Figure 2: SQLBase Command Center Table

### WHAT'S NEW IN SQLBASE 11.5

- SMP – support for multi-core and multi processor systems
- Smart Unicode implementation
- New SQLBase Command Center
  - Modern GUI
  - Edit all database objects
  - Monitor database activity and health
  - Automate recurring administration tasks
  - Automated notification
- Enhanced security through support for longer passwords
- Detached Cache Manager
- Support for true Binary columns
- Support for Microsoft® Vista and Windows Server 2008

SQLBase SMP brings immediate performance improvements plus significantly higher scalability to users. Applications run faster and more users can use one single SQLBase server when using SMP machines with Intel core duo processors or quad core and other SMP systems.

### Smart Unicode Implementation

SQLBase 11.5 brings smart Unicode support to enable international application deployment, supporting virtually any character set and language. For users that do not require Unicode, there is no performance hit or negative effect in SQLBase 11.5. Supporting Unicode is vital to many organizations, but not all organizations require Unicode as some users serve local markets. SQLBase 11.5 supports both user groups by providing a smart implementation with no effect on non-Unicode applications.

### SQLBase Command Center – New!

The new SQLBase Command Center provides an integrated GUI tool for database maintenance tasks. The Command Center offers automation of database administration tasks for easier database maintenance, automation of recurring administrative tasks, and notifications and interfaces to create, modify or add database objects such as columns, tables, indices, views and more.

From visual check database to automated maintenance tasks, the SQLBase Command Center integrates SQLConsole, SQLTalk and Connectivity Administration plus more, offering a wealth of powerful and easy to use features to maintain servers and databases and secure their healthy operation.

### Advantages of SQLBase 11.5

- SMP support performance gains of up to 34%
- Transparent for users and applications
  - Simple installation of SQLBase 11.5 on a SMP machine to take immediate advantage of performance gains
- Integration of all previous database maintenance tools in a rich GUI
- Automated database administration (scheduling tasks and email notification)
- Automatic and easy upgrade from SQLBase 9x and 11x; migration tool for SQLBase International
- Smart Unicode — no performance impact if Unicode is not used
- Password security of up to 32 characters
- Binary column supports storing images and other binary including through ODBC
- Support for Windows Server 2008 and Windows Vista

### SMP – Support for Multi-Processor and Multi-Core Systems

SQLBase 11.5 now takes advantage of multi-processor and multi-core machines with increased performance and much higher scalability. SQLBase 11.5 uses multithreading for read and write operations. TPC/C reporting applications run up to 34% faster using a quad core SMP machine. SQLBase write performance increases by up to 25%.

## SQLBASE 11.5 ENHANCEMENTS

### Support for 32 Character Passwords

SQLBase 11.5 introduces enhanced password security by providing industry standard password size of up to 32 characters. Securing valuable data is now easier.

### Microsoft Vista and Windows Server 2008 support

SQLBase 11.5 knows about the advanced security concepts of Windows Vista and Windows Server 2008. SQLBase 11.5 installs itself respecting the secure areas for programs and for data on the latest Windows systems. This enables customers to leverage the advanced security features of Windows Vista and Windows Server 2008. SQLBase 11.5 is a safe choice for the latest Microsoft operating systems.

### SQLBase Delivers Low Total Cost of Ownership and High Reliability

SQLBase remains one of the industry's most reliable embedded databases, continuing to reduce operational and support costs through self administration and proven reliability. SQLBase delivers scalability through advanced locking concepts including page versioning and row level locking behavior, is self recovering in the event of hardware failure, ensures data integrity and reduces downtime. SQLBase is a proven, fast and reliable embedded database for business solutions.

### Why Choose SQLBase?

- Embed it – and forget it
- Award winning industrial strength database invisibly and seamlessly embedded in your application
- No arduous hardware requirements imposed and no DBA required
- High performance, increased scalability, user satisfaction and transaction throughput
- Advanced security keeps data safe; includes 32 character password protection
- Complete database transparency for end users
- Deploys to a single-user laptop or to servers serving multiple hundred users
- Powerful Enterprise class technology for the SME
- Windows and Linux development and deployment

### TECHNICAL INFORMATION

- SMP support
- Unicode
- Centralized GUI database command center
- Row Level Locking Behavior
- Linux C-API, JDBC and Linux-ODBC
- PHP ready
- Support for large databases
- PHP ready
- Windows C-API, JDBC, ODBC, OLE DB and .NET Data Provider
- Interactive SQL tool SQLTalk
- SQL99 join syntax support
- Full relational and transactional database engine
- Automatic crash recovery
- Stored Procedures/Triggers
- Complete Referential Integrity
- Distributed transactions

### SUPPORT & INTERFACES

#### Windows Server Operating Systems - x86 platform (Intel/AMD)

- Windows 2000, Windows XP
- Windows Server 2003, 2008 (32bit and 64bit)
- Windows Vista

#### LINUX SERVER OPERATING SYSTEMS - x86 platform (Intel/AMD)

- RedHat AS/ES 4, RedHat AS/ES 5
- SuSE 10 Enterprise

#### Client Operating Systems - x86 platform (Intel/AMD)

- Windows 2000, Windows XP
- Windows Server 2003 (32bit and 64bit)
- Windows Vista
- RedHat AS/ES 4, RedHat AS/ES 5

#### SQL Language Support

- Support for much of the ANSI SQL-92 standard
- Fully transactional DML and DDL
- Support for distributed transactions

#### Win32 Programming Interfaces

- C API
- .NET Data Provider
- OLE DB Provider
- ODBC Driver
- JDBC Pure Java (type 4)

#### Linux Programming Interfaces

- C API
- ODBC 3.51 compliant (unixODBC & iODBC)
- PHP ready
- JDBC Pure Java (type 4)

### CORPORATE HEADQUARTERS

1420 Rocky Ridge Drive, Suite 380

Roseville, CA 95661

Tel: +1 916.218.4700

Email: [info@unify.com](mailto:info@unify.com)

#### UNITED KINGDOM

Tel: +44 0 1753 245 510

Email: [infouk@unify.com](mailto:infouk@unify.com)

#### FRANCE

Tel: +33 1 34 58 28 30

Email: [infofr@unify.com](mailto:infofr@unify.com)

#### GERMANY

Tel: +49 811 55543 0

Email: [infouk@unify.com](mailto:infouk@unify.com)

#### AUSTRALIA

Tel: +61 402 208254

Email: [asiapacinfo@unify.com](mailto:asiapacinfo@unify.com)

Copyright © 2009. Unify Corporation. All rights reserved.