

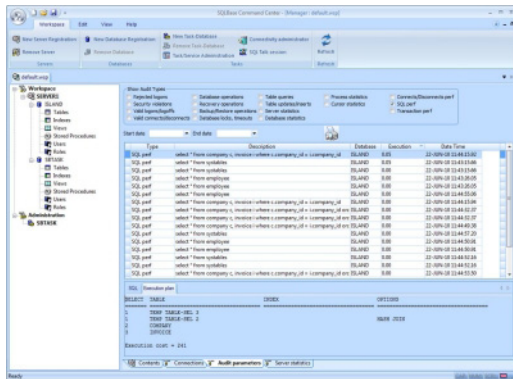
UNIFY'S EMBEDDED DATABASE WORKHORSE: SQLBASE 11.6

SQLBase is a fully relational, high performance, embedded database that allows organizations to manage data closer to the customer, where capturing and organizing information is critical. SQLBase provides what other database companies cannot deliver - a self-recovering, maintenance-free embedded database architecture that enables users from corporate IT to ISVs to focus on the business application itself - not the underlying database technology. With its small footprint, easy installation and low TCO, SQLBase is the embedded database of choice for organizations around the world.

SQLBase 11.6 is all about ease of use, high performance, easy and powerful database monitoring, and increased limits and roles. Significant new functionality, requested by customers, is in this powerful release of the beloved embedded database workhorse - SQLBase.

SQLBase 11.6 Command Center: Monitor, Analyze, Solve

- **Monitor:** Use the easy and intuitive SQLBase Command Center to monitor what is going on with your SQLBase servers – both local and remote SQLBase servers.
- **Analyze:** Easily detect the performance bottlenecks or other database related issues.
- **Solve:** Put solutions in place that solve performance bottlenecks.

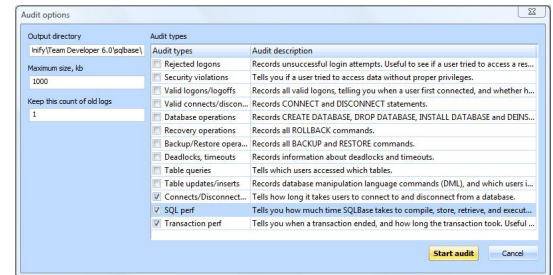


SQLBase 11.6 Command Center has all the information about your SQLBase servers. Command Center helps you to monitor the health of your and your customers' SQLBase installations. In case of performance bottlenecks, the new performance monitoring allows you to detect the source of the problem with a few mouse clicks. Solving the issue might only involve creating a few new indexes or switching to the new Read Committed isolation level.

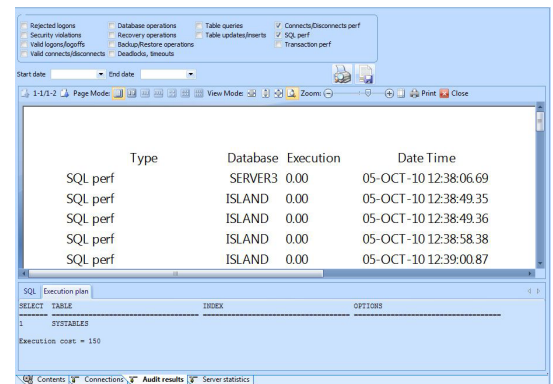
WHAT'S NEW IN SQLBASE 11.6

- Easy and powerful database monitoring
- Easier and faster detection and solutions for performance bottlenecks
- Easier management of users and roles
- More columns per table/view, more data for char and nchar fields
- Enhanced Read Committed (RC) for better multi-user application performance
- SQLBase 11.6 64-bit Windows Drivers

The following screenshot shows the auditing options available in the SQLBase Command Center. Just click any of the options to start the audit.



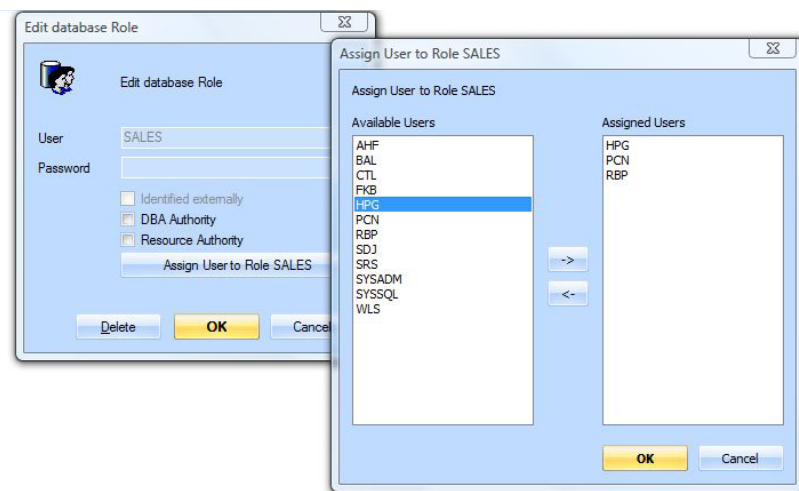
The image below is a print preview of a SQL performance audit.



SQLBASE 11.6 FEATURES

SQLBase 11.6 Roles:

Significantly easier user administration by means of the new roles concept. Simply create a few roles and define detailed security for only the roles. Then assign as many users as you like to a role. SQLBase Command Center lets you easily manage users and roles.



The image below shows the new Role rights tab for tables in SQLBase Command Center.

Name	Update Columns	ALTER	DELETE	INSERT	INDEX	SELECT	UPDATE
ENG		No	No	No	No	No	No
MKTG		No	No	No	No	No	No
QA		No	No	No	No	No	No
SALES		No	No	No	No	No	No

SQLBase 11.6 Increased Limits: More columns per table/view, more data for char and nchar fields

Now create up to 1000 columns per table or view. Create NCHAR Unicode fields having a length of 450 characters and varchar fields up to 900 characters. Use the new LONG NVARCHAR datatype for unlimited length Unicode data.

SQLBase 11.6 Enhanced Read Committed (RC) for Better Multi-user Application Performance

Enhanced RC modes allow reuse of existing applications without changes and leverage the no lock reading mode of RC. In RC mode, queries never have to wait for locks to be released before they read data. This can dramatically accelerate multi-user applications.

SQLBase 11.6 64-bit Windows Drivers

Do you have 64-bit applications that need to access SQLBase? SQLBase 11.6 comes with a 64-bit ODBC, OLEDB and .NET Data Provider.

SUPPORT AND INTERFACES

Windows Server Operating Systems - x86 platform (Intel/AMD)

- Windows 7 (32bit and 64bit)
- Windows Vista (32bit and 64bit)
- Windows XP (32bit and 64bit)
- Windows Server 2003 (32bit and 64bit)

Linux Server Operating Systems - x86 platform (Intel/AMD)

- RedHat AS/ES 4, RedHat AS/ES 5

SQL Language Support

- Support for much of the ANSI SQL-92 standard
- Fully transactional DML and DDL
- Support for distributed transactions

Win32 Programming Interfaces

- C API
- .NET Data Provider
- OLE DB Provider
- ODBC Driver
- JDBC Pure Java (type 4)

Linux Programming Interfaces

- C API
- ODBC 3.51 compliant (unixODBC & iODBC)
- PHP ready
- JDBC Pure Java (type 4)

CORPORATE HEADQUARTERS

1420 Rocky Ridge Drive, Suite 380
 Roseville, CA 95661
 Tel: +1 916.218.4700
 Email: info@unify.com

UNITED KINGDOM

Tel: +44 0 1753 245 510
 Email: infouk@unify.com

GERMANY

Tel: +49 89 208039 158
 Email: infode@unify.com

FRANCE

Tel: +33 1 34 58 28 30
 Email: infofr@unify.com

BRAZIL

Tel: +55 11 3054 6615
 Email: infofr@unify.com

AUSTRALIA

Tel: +61 402 208254
 Email: asiapacinfo@unify.com

Copyright © 2010. Unify Corporation. All rights reserved.