

Embedded SQLBase Deployment with Wise and SQLBase 8.0/8.1

CONTENTS

<i>Introduction</i>	3
<i>Required files for SQLBase Server for Windows</i>	3
No changes required for Netware	3
New components in SQLBase 8.0 and 8.1	3
MTS (COM+) support	4
SQLBase Management Console (SMC)	4
<i>New Dialogs</i>	5
<i>Altered files for client component installation</i>	7
SQLBase OLEDB Provider	7
SQLBase JDBC Driver	7
ODBC Drivers	7
<i>New client components</i>	7
.NET Data Provider (version 8.1 only)	7
<i>SQLConsole</i>	8
<i>New sample applications</i>	8
Testwin Sample.....	8
MTS Samples	9
ASP.NET Samples (version 8.1 only)	9
JDBC Sample	10
SQLBase Native commands.....	10

Introduction

The Embedded Deployment Kit supplied with SQLBase 8.0 and 8.1 uses InstallShield for Windows. Previous versions used the WISE installer.

This document is intended to assist those SQLBase customers who wish to continue using the WISE installer with version 8.0 and 8.1. It describes the new and changed components, files and dialogs included in the SQLBase 8.0 or 8.1 installer.

Not every single file used by the installer is shown here; only those affected by changes in version 8.0 and 8.1 are listed. This document should be used in conjunction with the book "SQLBase Embedded Deployment Kit" from version 7.6.x or earlier. Only by using these two sources together will you get a complete picture of which files need to be installed in 8.0 and 8.1.

Required files for SQLBase Server for Windows

The following files should be added when the Windows 32-bit Server component is selected:

`sqlbasereg.exe` Registers the SQLBase server as a service. Run "sqlbasereg.exe" without command-line arguments for a detailed explanation of parameters accepted.

`startservice.exe` Used for starting dbntsrv.exe as a service at the end of the installation if the user chooses. The user's choice is made in the "Server configuration" dialog described under the New Dialogs section of this document. Use the following command:

```
startservice -c<ComputerName> -sGupta SQLBase
```

"ComputerName" is the name of the computer on which the installation is running, obtained from the registry as illustrated in this code fragment from installation scripts:

```
if (nvResult = IS_WINDOWSNT) then
szKey = "System\\CurrentControlSet\\Services\\TCPIP\\Parameters";
nReturn = RegDBGetKeyValueEx (szKey, "Hostname", nvType, svValue, nvSize);
else
szKey = "System\\CurrentControlSet\\Services\\VxD\\MSTCP";
nReturn = RegDBGetKeyValueEx (szKey, "HostName", nvType, svValue, nvSize);
endif;
```

...the result is in svValue.

"Gupta SQLBase" is the name of the service to start. startservice.exe should be deleted at the conclusion of installation, after the service has been started (if requested).

No changes required for Netware

There are no name and/or component changes for the Netware portion of the installer.

New components in SQLBase 8.0 and 8.1

Add the following components to the "Software Components" dialog in MAIN.WSE. These new components are part of the Win32 Server component in SQLBase 8.0 and 8.1:

MTS (COM+) support

For Windows NT, 2000, or XP only, this component should install the following files in the target directory:

Sqlbrm.exe - This file needs to be registered using the command `sqlbrm.exe /service sqlmpipe.dll`
Sqlngci.dll

Sqlmts.ini - Sample sql.ini file for MTS support

startservice.exe - Used for starting sqlbrm.exe as a service – use the command line

```
startservice.exe -c<ComputerName> -sSQLBrm
```

"ComputerName" is the name of the computer on which the installation is running, obtained from the registry as illustrated in this code fragment from installation scripts:

```
if (nvResult = IS_WINDOWSNT) then
szKey = "System\\CurrentControlSet\\Services\\TCPIP\\Parameters";
nReturn = RegDBGetKeyValueEx (szKey, "Hostname", nvType, svValue,
nvSize);
else
szKey = "System\\CurrentControlSet\\Services\\VxD\\MSTCP";
nReturn = RegDBGetKeyValueEx (szKey, "HostName", nvType, svValue,
nvSize);
endif;
```

...the result is in svValue.

"SQLBrm" is the name of the service to start. startservice.exe should be deleted at the conclusion of installation, after the service has been started (if requested).

SQLBase Management Console (SMC)

This component is dependent on the SQLBase Server also being installed. If the user selects to start SMC at the end of the installation, use the following command:

`mmc.exe sqlbmmc_nt.msc` (the exact .msc filename is dependent on the operating system). This component should install the following files in the target directory:

Sqlbmmc_9x.msc (for Windows 9x OS)
Sqlbmmc_nt.msc (for Windows NT < 500)
Sqlbmmc_2k.msc (for windows NT >= 500)
Sqlbmmc.chm (help file)

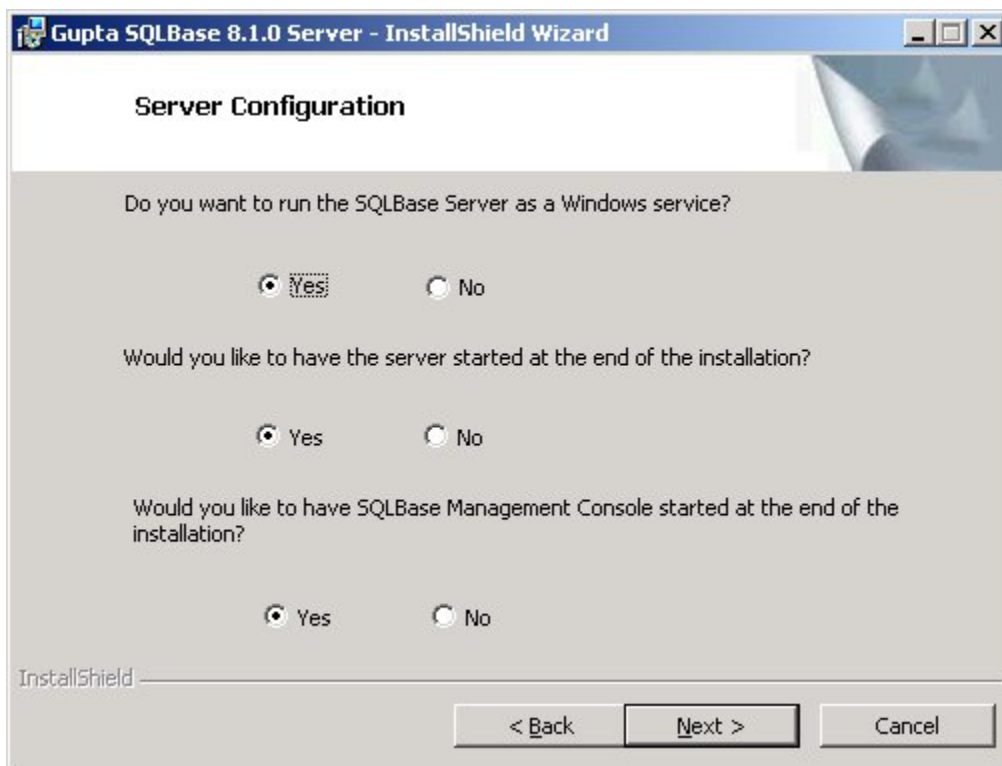
The following files should be installed in the *TargetDir*\topic subdirectory (these files can be found in \shipdisk\sqlbmmc_help):

Administering_SQLBase_as_an_NT_service.htm	Shutting_down.htm
--	-------------------

Monitoring_SQLBase_Server.htm	Monitoring_SQLServer.htm
NT_Application_Event_Log.htm	Introduction_to_SQLBase_Server_Monitor_(SMC).htm
SQLBase_as_an_application_program.htm	SQLBase_as_an_NT_Service.htm
SQLBase_database_information.htm	SQLBase_Resource_Manager.htm
SQLBase_Service_information.htm	Using_the_SMC_Toolbar.htm

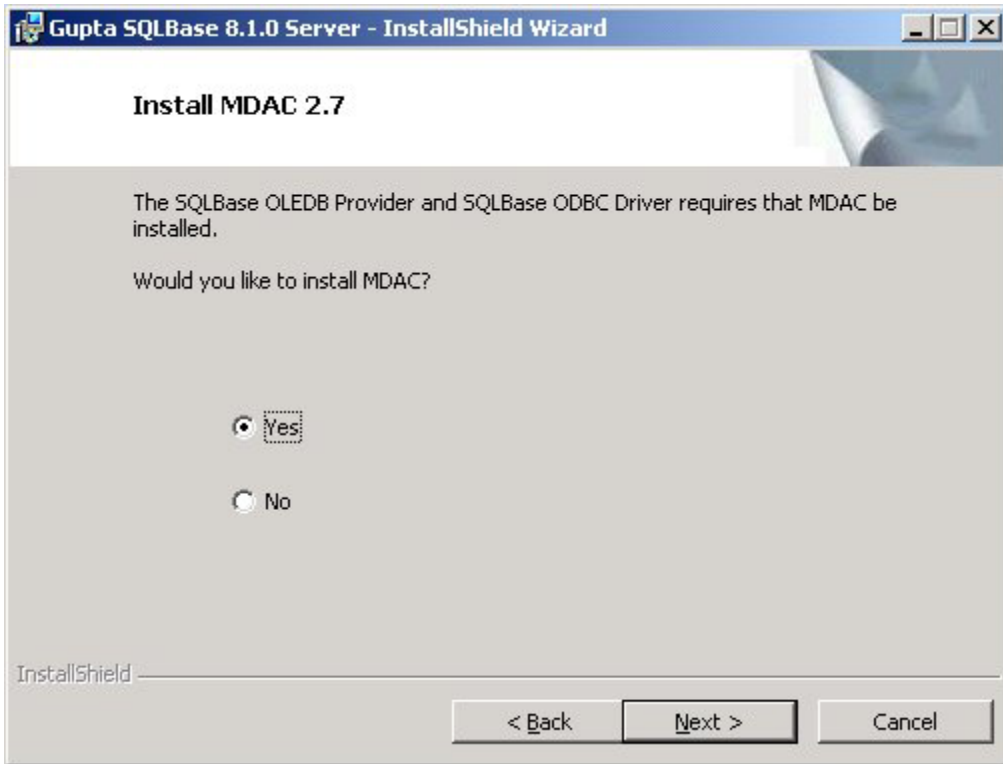
New Dialogs

The following new dialog has been added to prompt the user in configuring the 32bit server:



If the user chooses to run the server as a service, create the "Gupta SQLBase" service registry entries. If the user wants the server started at the end of the installation also start SQLBrm.exe as a service at the end of the installation. If the user chooses to start SMC, start it at the end of the installation.

The following new dialog has been added to prompt the user in Installing MDAC 2.7. This dialog is displayed if either the ODBC Driver or OLEDB Provider features are selected. A choice of "Yes" will run mdac_typ.exe



The following new dialog has been added to prompt the user for information to update the serverpath variable in sql.ini. This dialog should be displayed if only the client feature is installed:



Altered files for client component installation

The following components should be **modified** in the "Select Client Components" dialog in MAIN.WSE and the actual code that installs the files should be modified in CLIENTS.WSE:

SQLBase OLEDB Provider

Change the code to install the following files:

```
Sqlbaseoledb.dll  
Sqlbaseoledb.hlp
```

Register the dll using the following command:

```
regsvr32.exe /s sqlbaseoledb.dll
```

SQLBase JDBC Driver

Change the code to install the following files and update the CLASSPATH variable to *JDBCTargetDirectory*\SQLBaseJDBC.jar:

```
SQLBaseJDBC.jar
```

ODBC Drivers

This component now only installs the SQLBase ODBC Driver (we no longer ship the Merant drivers). Required files include:

```
SQLBaseODBC.dll  
SQLBaseODBCSetup.dll  
SQLBaseODBCConnect.hlp  
SQLBaseODBCSetup.hlp
```

Register the dll using the following command:

```
regsvr32.exe /n /s /i:targetdir AddDefaultDSN sqlbaseodbcsetup.dll
```

New client components

The following components have been added to the client portion of the installer. Add the following components to the "Select Client Components" dialog (a sub dialog of "Software Components") in MAIN.WSE.

.NET Data Provider (version 8.1 only)

In order to use the .Net Data Provider you must have the .NET Framework installed. To determine if .NET Framework exists, check the registry for HKEY_LOCAL_MACHINE\Software\Microsoft\.NETFramework and look for the value 'InstallRoot'. If the registry value exists, then .NET Framework exists. If the value doesn't exist, you should run dotnetfx.exe (which you can find in \shipdisk) to install it. This component should install the following files in the target directory:

Gupta.SQLBase.Data.dll	Sqlbaseutil.dll	Sqlngci.dll
Sqlwntm.dll	Error.sql	Message.sql

References to the following files should be updated to reflect the new names in this release:

cfgwi10.exe is now gptconfig.exe
 cfgwi10.hlp is now gptconfig.hlp
 cfgwi10.cnt is now gtpconfig.cnt
 cfping.exe is now gptcfping.exe
 cfopgi10.dll is now gptcfping.dll

SQLConsole

Now uses Team Developer 2.1 runtime files. Replace the sqlconsole files with the following:

sqlcon81.exe	sqlcon81.dll	tblini.sql	sqlcon.sql
csfcnv32.dll	dbsparm.ini	srvparm.ini	slider32.dll
sqlcon81.hlp	sqlcon81.cnt	cbawi21.dll	cdlli21.dll
csfcnv32.dll	csi21.dll	gctli21.dll	geei21.dll
gobji21.dll	graphpr.hlp	gsjpg32.dll	gspng32.dll
gsprop32.dll	gsw32.exe	gswag32.dll	gswdl132.dll
gtlsi21.dll	im31bmp.dil	im31gif.dil	im31img.dil
im31jpg.dil	im31pcx.dil	im31tif.dil	im31wmf.dil
imgman32.dll	maili21.dll	qcdki21.dll	qdlgi21.dll
qgphi21.dll	qtabi21.dll	qtbli21.dll	qvisi21.dll
qwaxi21.dll	rdwi21.dll	slider32.dll	snumi21.dll
srvc21.dll	ssti21.dll	strci21.dll	swbdi21.dll
tabli21.dll	vti21.dll		

New sample applications

New samples have been added to the SQLBase 8.0 and 8.1 installer under the "Development Kit" feature. The following are the individual features for the new samples.

Testwin Sample

These files should be copied from \shipdisk\samples\testwin to *targetdir*\samples\testwin:

DATA	Resource.h	Stdafx.cpp	Stdafx.h
Testwin.cpp	Testwin.dsp	Testwin.h	Testwin.ico

Testwin.rc	Testwin.rc2	Testwindlg.cpp	Testwindlg.h
------------	-------------	----------------	--------------

MTS Samples

This feature contains many new files organized into multiple samples as follows:

TDBankCom, in directory *TargetDir*\Samples\COMPlus\Banking\TDBANKCOM
Tdbankcom.app

VBBankClient, in directory *TargetDir*\Samples\COMPlus\Banking
Vbbankclient.exe
Vbbankclient.frm
Vbbankclient.vbp
Vbbankclient.vbw

VBBankCom, in directory *TargetDir*\Samples\COMPlus\Banking\VBBANKCOM
AccountMaintenance.cls
AccountProcessing.cls
IntermediateProcessing.cls
VBBankCOM.dll
VBBankCOM.vbp
VBBankCOM.vbw

VCBankCom, in directory *TargetDir*\Samples\COMPlus\Banking\VCBANKCOM
VCBankCOM.dll

TDBankCom, in directory *TargetDir*\Samples\COMPlus\Banking\TDBANKCOM
TDBankCOM.dll

Documentation, in directory *TargetDir*\Samples\COMPlus
COM Samples Guide.pdf

ASP.NET Samples (version 8.1 only)

Copy the following files into the appropriate subdirectory (in **bold**) under *TargetDir*:

Samples\ASPNET_

Readme.txt - instructions on how to run the ASPNET sample

Samples\ASPNET_Sample\Database Creation

Nile.sql - sql script to create initial schema and procedures

Samples\ASPNET_Sample

AssemblyInfo.cs	NileApplication.cs	ResultsCategoryEnum.cs
SQLBaseHelper.cs	build.bat (used to create Nile.dll)	nileproxy.cs

Samples\ASPNET_Sample\web

Login.htm	Logout.aspx	Logout.htm	Spotlight.htm
Thankyou.htm	account.aspx	addtocart.aspx	browse.aspx
browse.htm	cart.aspx	checkout.aspx	global.asax
login.aspx	logincart.aspx	main.htm	nile.htm
postinfo.htm	results.aspx	search.htm	side.htm
specials.aspx	test.htm	top.htm	

Samples\ASPNET_Sample\web\bin

Gupta.SQLBase.Data.dll - same as copy in Gupta directory
Nile.dll

Samples\ASPNET_Sample\web\graphics

Thumbs.db	account.gif	account_button.gif	browse.gif
browse_button.gif	cart_button.gif	checkout.gif	checkout_button.gif
cream.gif	dkcart.gif	dkolive.gif	home_button.gif
htmlbook.gif	logo.gif	search.gif	search_button.gif
specials.gif			

JDBC Sample

These files should be copied to *TargetDir*\Samples\jdbc:

AutoCommits.java	ConnectDisconnect.java	CountrySettings.java
FetchByName.java	FetchDataTypes.java	InsertByNumber.java
InsertDataTypes.java	InsertWOBinds.java	Isolations.java
LongRunning.java	Longs.java	Nulls.java
PositionedUpdate.java	Precompiled.java	Proc.Java
ProcQuery.Java	ResultSetMeta.Java	ReuseStmt.java
SQLBaseJDBC Samples.SQL	ShowVersion.java	Transactions.java
fetch.java	fetchloop.java	readme.htm

SQLBase Native commands

These files should be copied to *TargetDir*\Samples\VB6:

AboutDialog.frm	AboutDialog.frx	EraseDialog.frm
-----------------	-----------------	-----------------

LoadUnloadDialog.frm	RetrieveDialog.frm	SqlBaseNativeCmdSample.FRM
SqlBaseNativeCmdSample.exe	SqlBaseNativeCmdSample.vbp	SqlBaseNativeCmdSample.vbw
StoreDialog.frm		